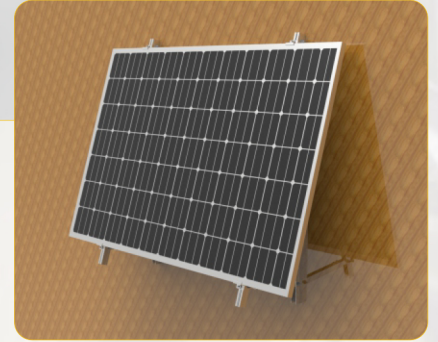


Installed on the ground

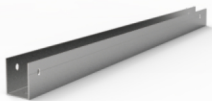


Installed on wall with expansion bolts

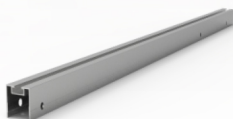
SYSTEM PARAMETER

Type	Balcony Solar Mounting System	Warranty	10 year
Application	Ground/Wall/Balcony/Guardrail	Max wind Speed	35m/s
Tilt Angle	0°, 10°-30° Adjustable	Max Snow Load	1.0KN/m ²
Material	AL6005-T5, Steel, SUS304	Color	Natural Silver or Black
Panel Layout	Landscape (Horizontal)		
Max Panel width	1150mm		
Design Standard	AS/NZS 1170, DIN 1055, JIS C8955: 2017, EN 1991-1, IBC 2000		

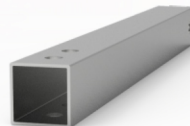
SYSTEM COMPONENTS



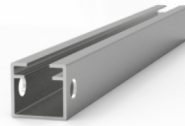
MAIN COLUMN
33.5*50*1.5, L=1300mm



AUXILIARY COLUMN
29.5*39*1.1, L=1300mm



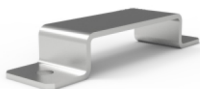
CROSS BRACE
30*30*1.5, L=310mm



CROSS BRACE
26*25*1.5, L=290mm



RAILING HORIZONTAL SUPPORT
30*30*1.5, L=1150mm



HOOP
35*135*2.0 (SUS304)



HOOK
230*70*45*1.5 (SUS304)



END CLAMPS
L=50mm

